

Bath/Shower Mat®

Issue Date: 1/1/2016 Version 1.2

Surface Preparation

Before you begin, your bath/shower must be completely clean of all soap film residue and thoroughly dry. If possible, clean tub with a biodegradable cleaner. Cleaning solutions containing silicone or products that leave a residue or coating, including powdered cleaners, must be avoided. Apply to a smooth surface only.



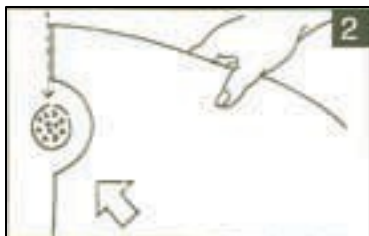
1A



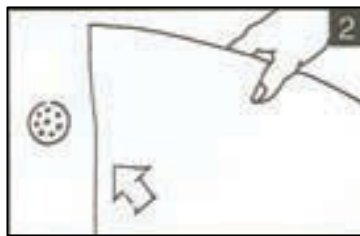
1B

STEP ONE

Clean hands thoroughly. Then, using your fingertips, peel back one to two inches of the paper backing along the edge of the mat to be placed closest to the drain. Slightly crease it and try to avoid touching the adhesive backing.



2A



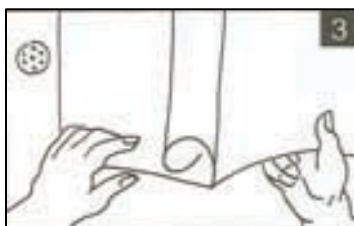
2B



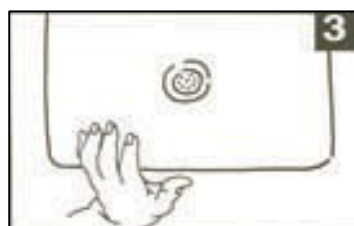
2C

STEP TWO

Place mat cut-out edge even with the middle of the drain. Using your hand or rubber roller, firmly rub the exposed section of the mat onto the tub surface. Rubber rollers are available at graphic arts stores.



3A



3B

STEP THREE

With exposed section in place, reach under the mat and gently peel the creased paper backing slowly off while using your hand or rubber roller, firmly rub the mat from the middle out, onto the tub

surface. Be sure all the edges are properly adhered to the tub bottom. Once in place, your bath mat is ready to use. No curing time is necessary.

CLEANING

Periodic cleaning is necessary with this mat. Use a stiff bristled scrub brush with commercial tub and tile cleaner designed to remove soap scum and body oils.

BATH STRIP/ROLL INSTALLATION INSTRUCTIONS

Surface Preparation

Before you begin, your bath/shower must be completely clean of all soap film residue and thoroughly dry. Clean bath/shower with a biodegradable cleaner. Cleaning solutions containing silicone or products that leave a residue or coating, including powdered cleaners, must be avoided.

STEP ONE

Apply to a smooth surface only and avoid all grout areas.

STEP TWO

Clean hands thoroughly. Place each strip/roll on the bath/shower bottom in the pattern you desire. Then, using your fingertips, peel back one to two inches of the paper backing on your first strip/roll. Slightly crease the paper and try to avoid touching the adhesive backing.

STEP THREE

Adhere the exposed adhesive end of your first strip/roll. With the exposed section in place, reach under the strip and gently peel the creased paper backing slowly off, while you continue to carefully and firmly adhere the strip/roll into place. Simply cut the roll length with scissors. Using your hand, firmly rub over the entire surface of the strip making sure all edges are properly adhered to the bath/shower surface. Repeat directions for each strip. Once in place, your bath/shower is ready to use. No curing time is required.

CLEANING

Periodic cleaning is necessary. Use a stiff bristled scrub brush with commercial tub and tile cleaner designed to remove soap scum and body oils.